

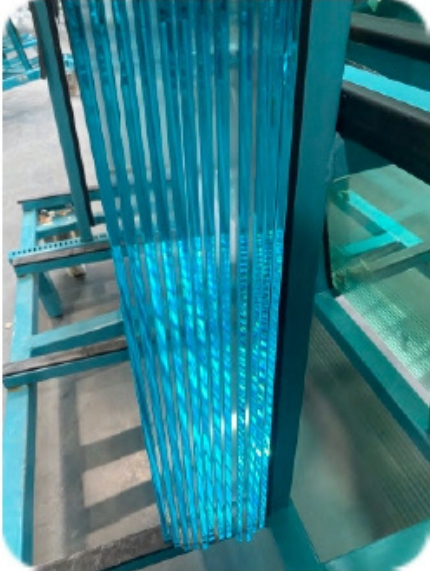


**PRODUCTION OF TEMPERED  
AND LAMINATED GLASS**

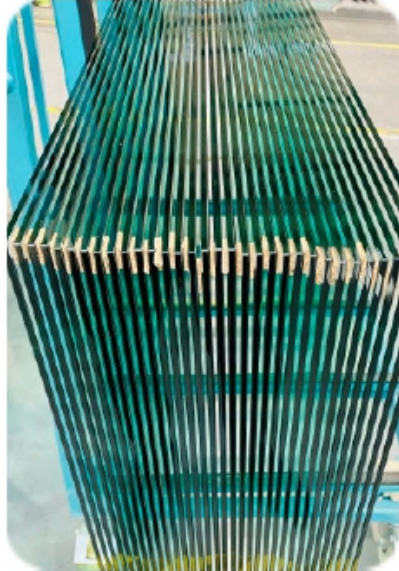
**HOSET**

# PRODUCTION OF TEMPERED AND LAMINATED GLASS

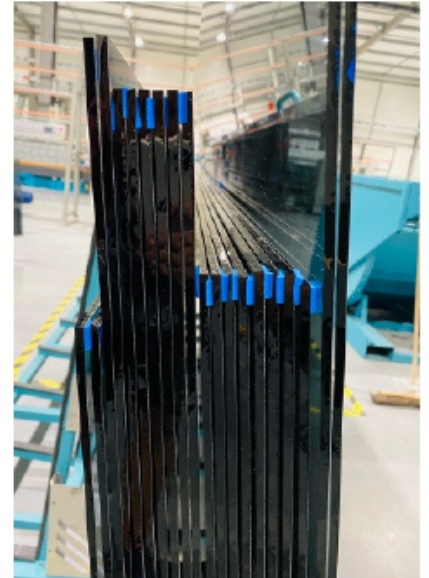
## ■ TYPE OF GLASS



ULTRA CLEAR



CLEAR



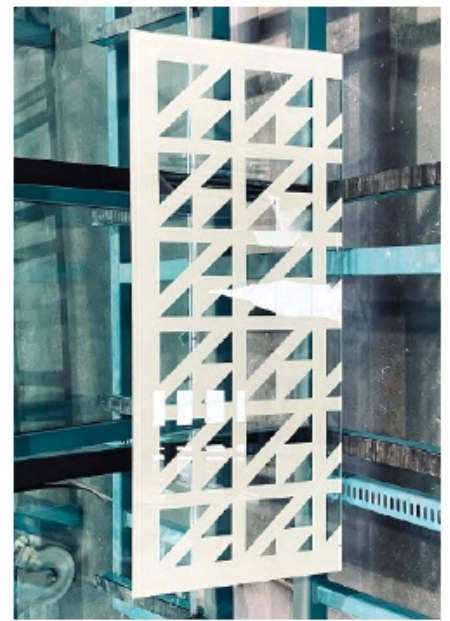
TINTED



SATIN



PATTERN



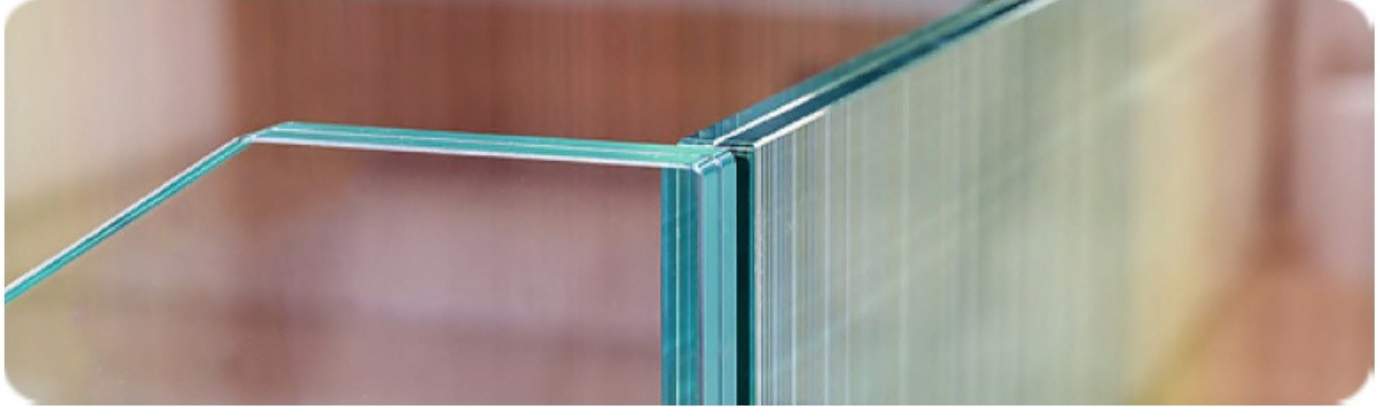
UV PRINTED

- MAX. SIZES: 3210x2550 mm
- THICKNESS: 4; 5; 6; 8; 10; 12; 15; 19 mm



# PRODUCTION OF TEMPERED AND LAMINATED GLASS

## ■ TEMPERED LAMINATED GLASS **VSG ESG / EVA FOIL**



## ■ LAMINATED GLASS **VSG / PVB FOIL**



MATT PVB



CLEAR PVB



TINTED / CLEAR PVB

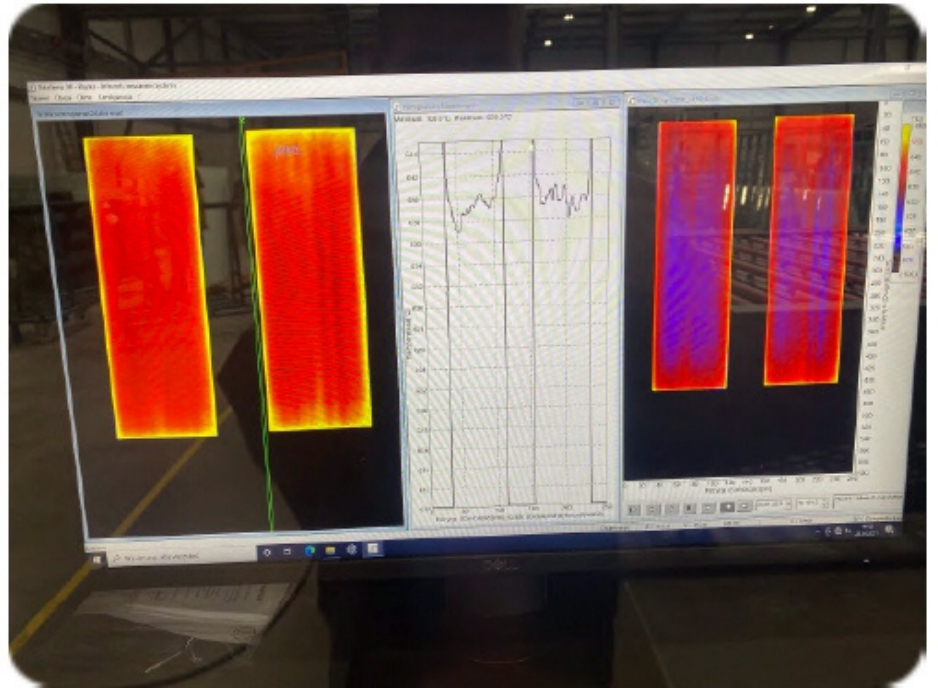
- MAX. SIZES:
  - VSG ESG / EVA 3200x2500 mm
  - VSG / PVB 6000x3210 mm
- THICKNESS:
  - VSG ESG / EVA 44.1 - 1212.4 mm
  - VSG / PVB 33.1 - 88.2 mm
- FOIL COLORS: CLEAR; SATIN; MATT; BLACK; WHITE; SOUND;

# PRODUCTION OF TEMPERED AND LAMINATED GLASS

## ■ WAREHOUSE - CAPACITY 1200 T



## ■ TEMPERING FURNACE - NorthGlass 4200x2400MM WITH SCANNER





# PRODUCTION OF TEMPERED AND LAMINATED GLASS

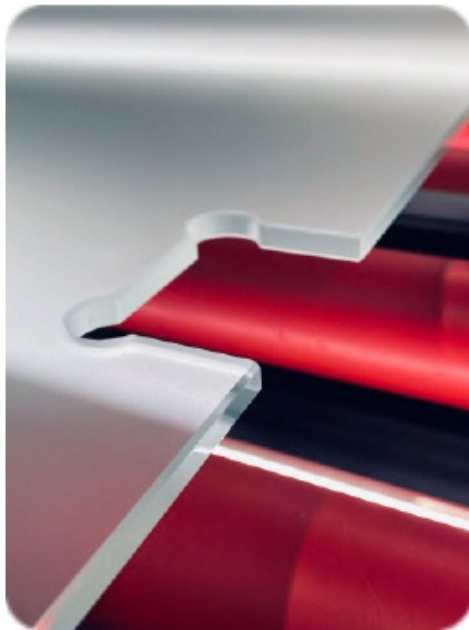
## ■ TWO AUTOMATIC LINE FOR CUTTING **FLOAT** AND **LAMINATED GLASS**



## ■ **TWO** DOUBLE EDGER MACHINE



## ■ **TWO** CNC FOR DRILING AND MILLING



## ■ **THREE** FURNACES FOR LAMINATING



# CONTACTS



044 744 1465



myynti@honet.fi



MiiA Rakennus Oy, Akerlundinkatu 11A, 33100 Tampere



Open: by appointment



Call center daily from 9:00 to 22:00



---

**PRODUCTION OF  
TEMPERED AND  
LAMINATED GLASS**