

Concealed
wardrobe systems

THE IDEAL





What makes the HOSET system special?

- Concealed mounting, where all fasteners and system elements remain invisible after installation;
- Minimalist design that emphasizes the system's functionality and aesthetics rather than its fittings;
- Versatility, making the system ideal not only for walk-in closets, but also for kitchens, hallways, and even bedrooms. The HOSET concealed mounting system offers true design freedom in wardrobe design. Easily adapt it to your needs and create personalized solutions for any space!



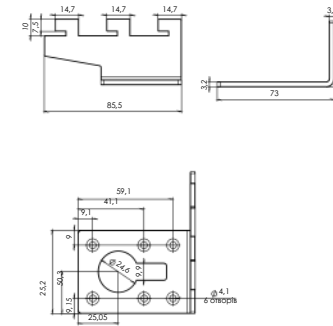
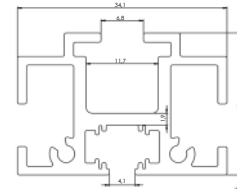
Accessories overview

- Color – black;
- Material – aluminum and Zamak zinc alloy;
- Maximum profile height – 3000 mm;
- Maximum distance between uprights – 800 mm;
- Load capacity per chipboard/MDF shelf – 25 kg;
- Load capacity for cabinet fasteners – 30 kg.

206391 Fastening for cabinet (Left)



The main element of the wardrobe system structure, to which all other components are attached. The upright can be cut to custom sizes (the full profile length is charged, leftovers are non-refundable).



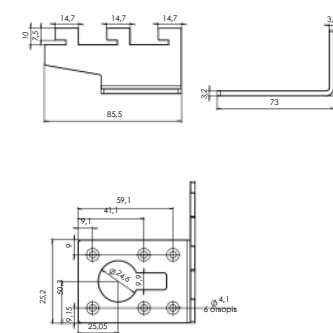
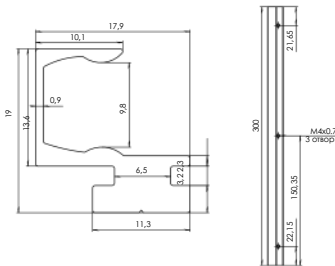
A single-sided bracket that can be left or right, depending on the cabinet installation method. Supports up to 30 kg.



189440 Fastening for cabinet (Right)



Special clips are used to mount wall panels: one part attaches to the upright, the other to the panel. They connect by «snapping» together.
Note: each rail requires 2 installation screws.



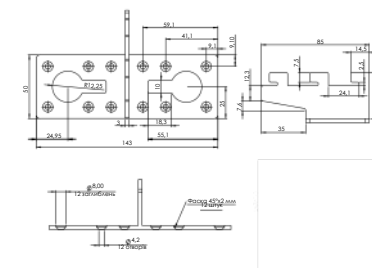
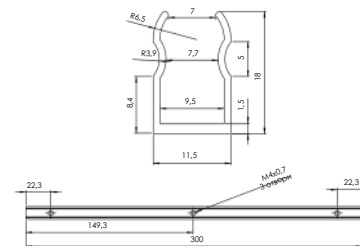
A single-sided bracket that can be left or right, depending on the cabinet installation method. Supports up to 30 kg



189439 Fastening for cabinet (Double)



Additional fastening for secure shelf attachment to the bracket. It is recommended to use 4 cams per shelf.



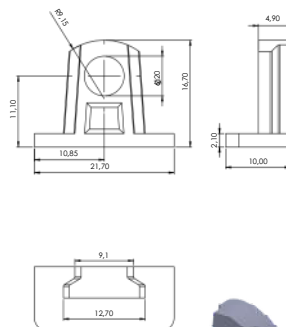
Used when two cabinets are installed side by side. Provides a strong connection.



189438 Cam for chipboard shelves



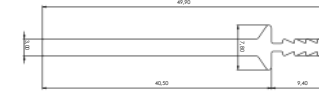
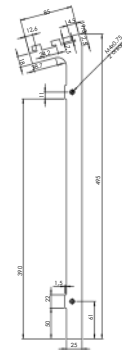
Additional fastening for secure shelf attachment to the bracket. It is recommended to use 4 cams per shelf.



189437 Shoe shelf bracket



Universal metal brackets, 500 mm long, suitable for 25 mm thick shelves. Supports up to 25 kg. When using 18 mm chipboard, a small rim is formed on the sides.



199184 Profile for shoe shelf (Inner)

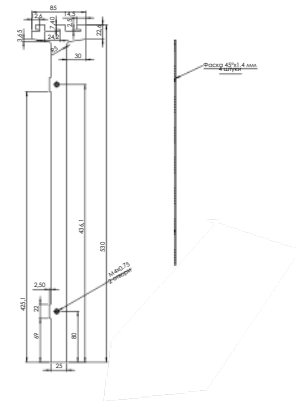


Serves as a support for shoes on the shelf, prevents slipping, and strengthens the structure. Installed closer to the back edge of the shelf.

189436 Shelf bracket



Universal metal brackets, 500 mm long, suitable for 25 mm thick shelves. Supports up to 25 kg. When using 18 mm chipboard, a small rim is formed on the sides.



199185 Profile for shoe shelf

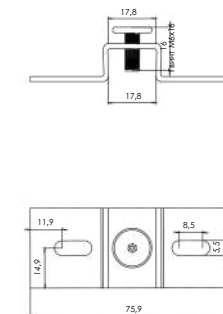
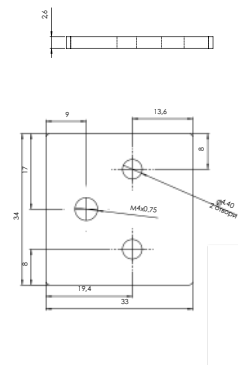


Provides both decorative and practical functions. Ensures a finished look for the shelf and keeps shoes in place when tilted.

189435 Standard leg



Adjustable support for positioning the upright in a straight line.
Note: an M6*35 screw must be ordered for the rail.



189432 Back panel holder 180°

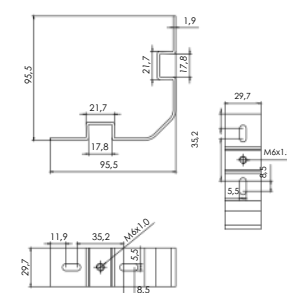
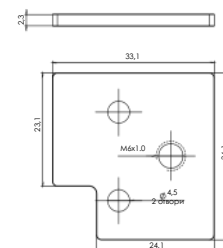
Used for positioning the upright in a straight line.



189434 Corner leg



Support for installing the upright in a room corner.
Note: an M6*35 screw must be ordered for the rail.



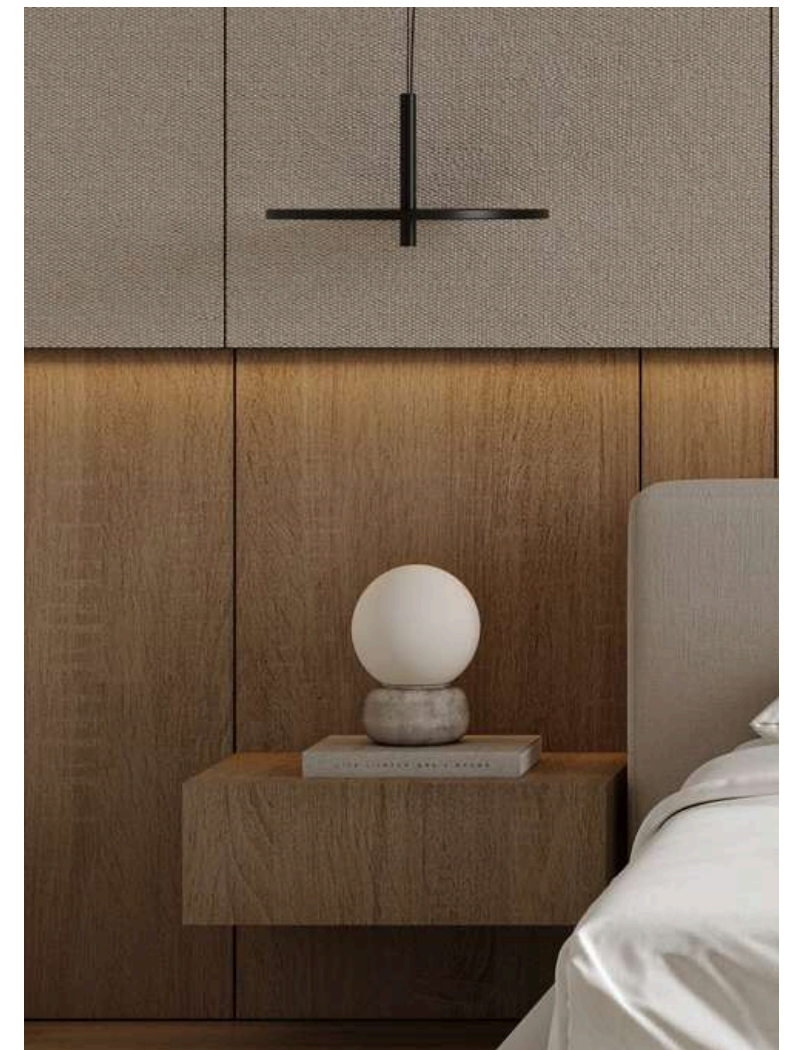
189433 Back panel holder 90°

Used for positioning the upright in a corner.





The HOSET concealed wardrobe system is an aesthetic and functional solution for the bedroom.





The HOSET concealed wardrobe system is a compact solution for the workspace.



The HOSET concealed wardrobe system is a practical option in the form of a full cabinet with an interior partition.



The HOSET concealed wardrobe system integrates seamlessly into the relaxation area.



The HOSET concealed wardrobe system keeps children's rooms tidy and convenient.





The HOSET concealed wardrobe system is the optimal solution for organizing a walk-in closet.

CONTACTS



 myynti@hose.fi