

HO

SET

KIDS

PRODUCT CATALOG


*Exactly what you
need for your child*



CONTENT:



Lockers for children
Tables and chairs
Game Zone
Creative lighting
Beds for sleeping
Reception

<u>3</u>	↓	
<u>5</u>	↓	
<u>7</u>	↓	
<u>9</u>	↓	
<u>11</u>	↓	
<u>13</u>	↓	

CHOOSING YOUR HOME

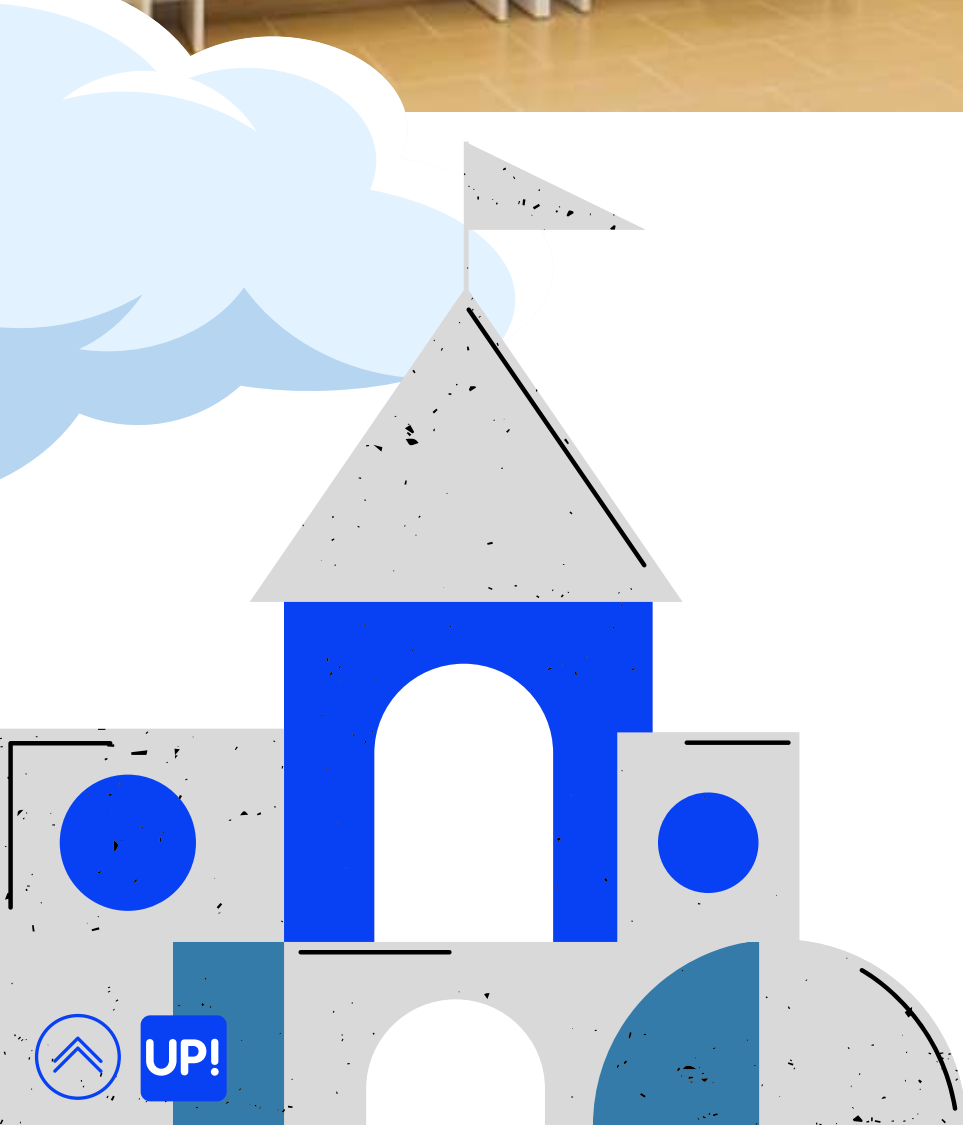
Lockers for children

The choice of wardrobes for kindergarten is carried out according to the criteria of safety, practicality, aesthetic appeal.

An obligatory element of the furniture of the locker rooms should be individual cells for hats, outerwear, shoes.

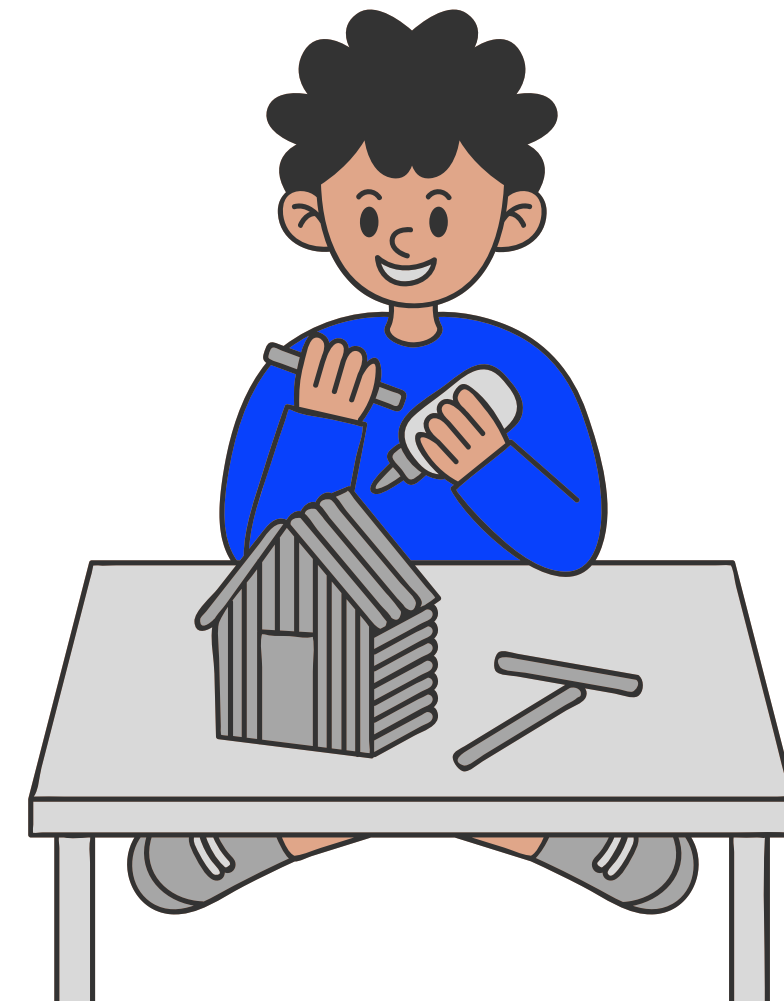
One of the most important conditions for the purchase of furniture is the appropriate size for the age characteristics of children.





Tables and chairs

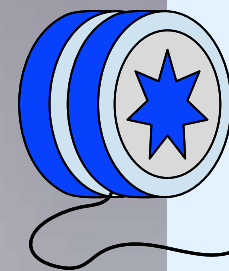
Children's table and chair play an important role. The chair should be comfortable and comfortable, and the table should be roomy so that the child can sit comfortably on it.



HO
SET







Game Zone

The play area in kindergarten is one of the main ones, because it is the game that contributes to the development of thinking and imagination of kids.

At preschool age, children's creative abilities are activated, so they should be surrounded by beautiful things.



HO
SET

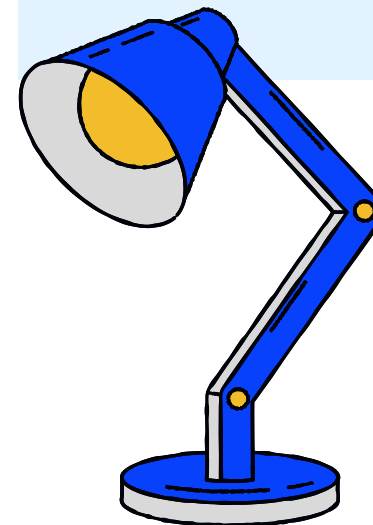


Creative lighting



Creative lighting will always attract maximum attention. Children will be delighted to look at such a product and rejoice.

Also, it creates a cozy and pleasant atmosphere. We are sure that not every kindergarten has this.



HO
SET



Beds for sleeping

When choosing beds for a kindergarten, it is necessary to take into account the age category of the group, the useful area of the room for sleeping, the quality, safety and environmental compliance of materials, practicality, durability of the structure and colors.

Along with classic cribs of traditional sizes, you can find beds for the kindergarten of a new generation: transformers, children's bunk beds, as well as the recently popular so-called chest of drawers.



UP!



Reception



HO
SET

